

VENUS Data Now Available via Oceans 2.0

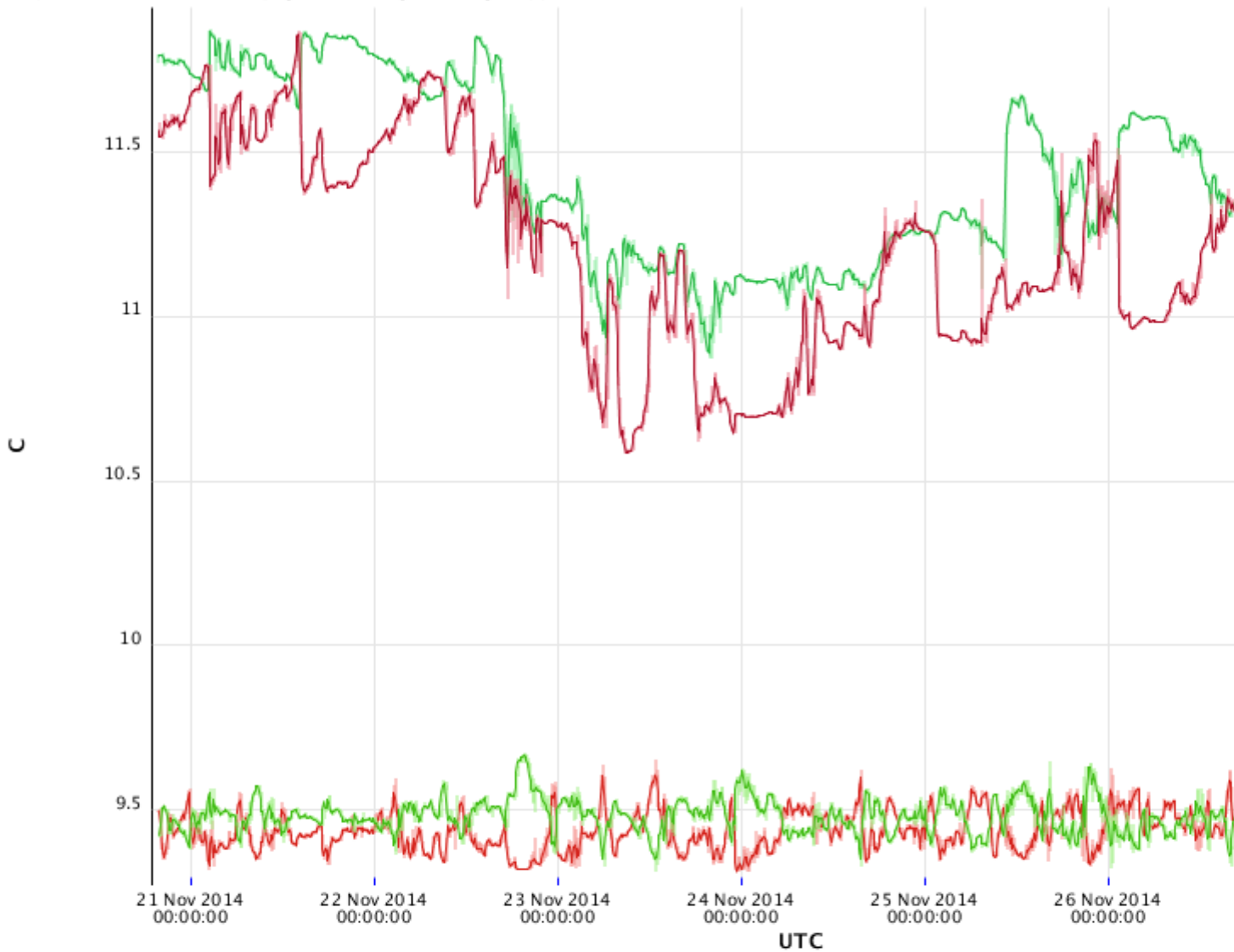
Submitted by Dwight Owens Wed, 2014-11-26 15:19

Some data archives from the VENUS Observatory in the Salish Sea, encompassing the Strait of Georgia and Saanich Inlet can now be accessed via Oceans 2.0 software tools including:

- Data Search: a tool for finding and downloading data
- Plotting Utility: a graphing tool for time-series scalar data
- Device Console: a tool for monitoring instrument health
- Device Search: a tool for finding instrument information

The Victoria Experimental Network Under the Sea (VENUS) has been in continual operation since February, 2006. Deployed in the coastal waters of southern British Columbia, the observatory provides long-term oceanographic data on physical, chemical, biological, and sediment conditions in Saanich Inlet and in the Strait of Georgia near Vancouver, British Columbia. Now, most (but not all) of these long running time-series data can be interactively plotted (using Plotting Utility) and most data products can also be downloaded via Oceans 2.0. All standard data products are available, while some specialized device-specific data products will be made available over the coming months.

Temperature (red) and Salinity (green) in Folger Passage (upper curves) and Saanich Inlet (lower curves)

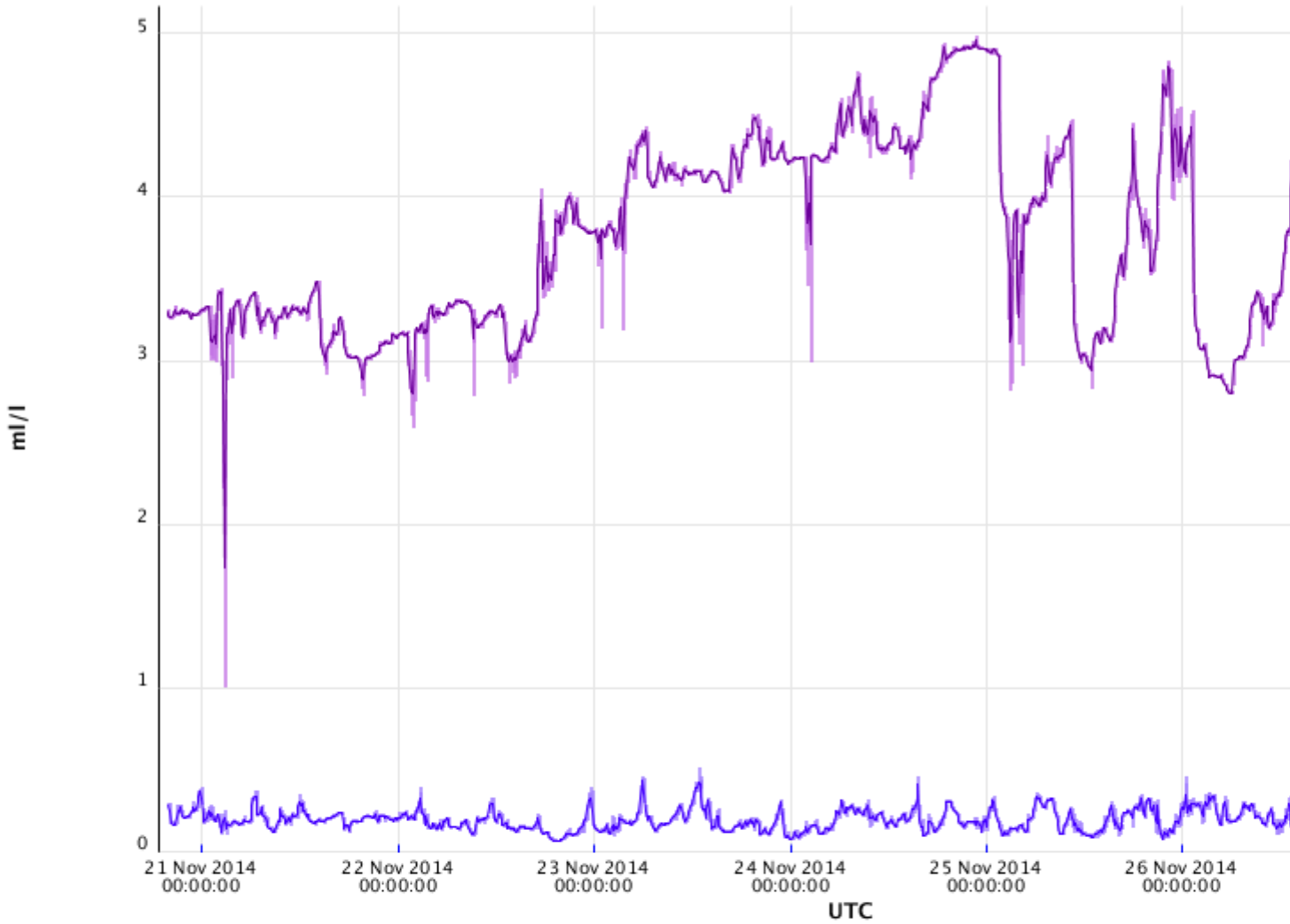


Temperature (red) and Salinity (green) in Folger Passage (upper curves) and Saanich Inlet (lower curves)

- Pacific - Salish Sea - Saanich Inlet - Patricia Bay - Saanich Inlet VENUS Instrument Platform - CTD A - CTD - Temperature (9778) - Clean - MinMax
- Pacific - Salish Sea - Saanich Inlet - Patricia Bay - Saanich Inlet VENUS Instrument Platform - CTD A - CTD - Temperature (9778) - Clean - Avg
- Pacific - Northeast Pacific Ocean - Folger Passage - Folger Deep - CTD - Practical Salinity (8509) - Clean - MinMax - Downsampled
- Pacific - Northeast Pacific Ocean - Folger Passage - Folger Deep - CTD - Practical Salinity (8509) - Clean - Avg - Downsampled
- Pacific - Northeast Pacific Ocean - Folger Passage - Folger Deep - CTD - Temperature (8511) - Clean - MinMax - Downsampled
- Pacific - Northeast Pacific Ocean - Folger Passage - Folger Deep - CTD - Temperature (8511) - Clean - Avg - Downsampled
- Pacific - Salish Sea - Saanich Inlet - Patricia Bay - Saanich Inlet VENUS Instrument Platform - CTD A - CTD - Practical Salinity (9774) - Clean - MinMax
- Pacific - Salish Sea - Saanich Inlet - Patricia Bay - Saanich Inlet VENUS Instrument Platform - CTD A - CTD - Practical Salinity (9774) - Clean - Avg

Using Plotting Utility you can now create combined plots of data from different observatories. The above plot shows temperature (red) and salinity (green) from Folger Passage off the west coast of Vancouver Island (upper curves) and Saanich Inlet off the east coast of Vancouver Island (lower curves), 21-28 Nov 2014. The lower plot shows oxygen concentration (corrected) for both locations over the same time period. All measurements were gathered from a depth of approximately 100 m.

Oxygen Concentration (corrected) in Folger Passage (upper curve) and Saanich Inlet (lower curve)



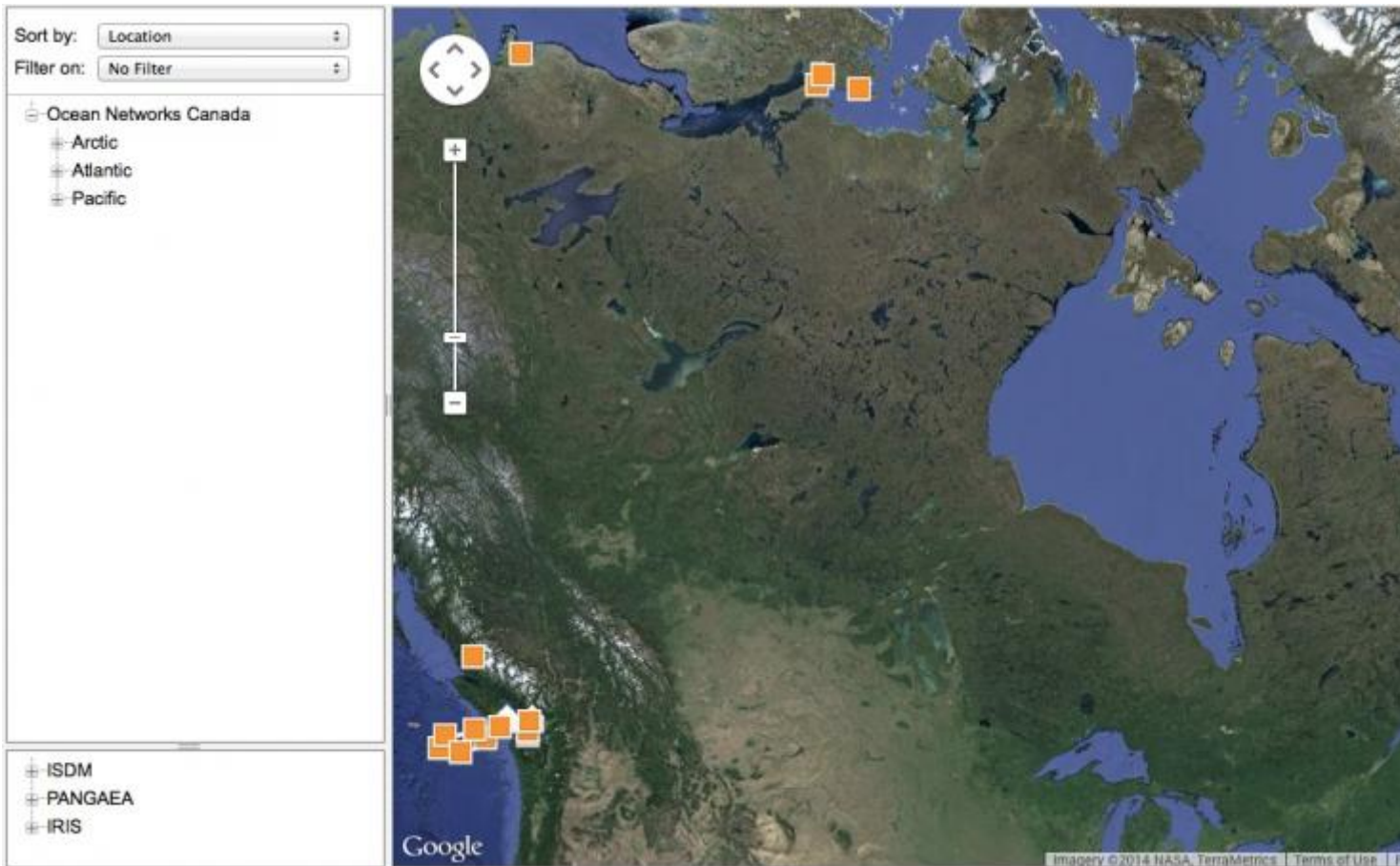
Oxygen Concentration (corrected) in Folger Passage (upper curve) and Saanich Inlet (lower curve)

- SeaBird 43 Oxygen (S/N 2584) - Oxygen Concentration Corrected (9790) - Clean - MinMax - Downsampled
- SeaBird 43 Oxygen (S/N 2584) - Oxygen Concentration Corrected (9790) - Clean - Avg - Downsampled
- Aanderaa Optode 3830 (S/N 911) - Oxygen Concentration Corrected (4308) - Clean - MinMax - Downsampled
- Aanderaa Optode 3830 (S/N 911) - Oxygen Concentration Corrected (4308) - Clean - Avg - Downsampled

This availability is part of Ocean Networks Canada's effort to merge data delivery services. Users will still be able to download data via the [VENUS website](#), but this will be gradually phased out as we transition to fully merged services. VENUS users are encouraged to start making the switch to Oceans 2.0 for their data needs. **Note: data access via web services will not be affected.**

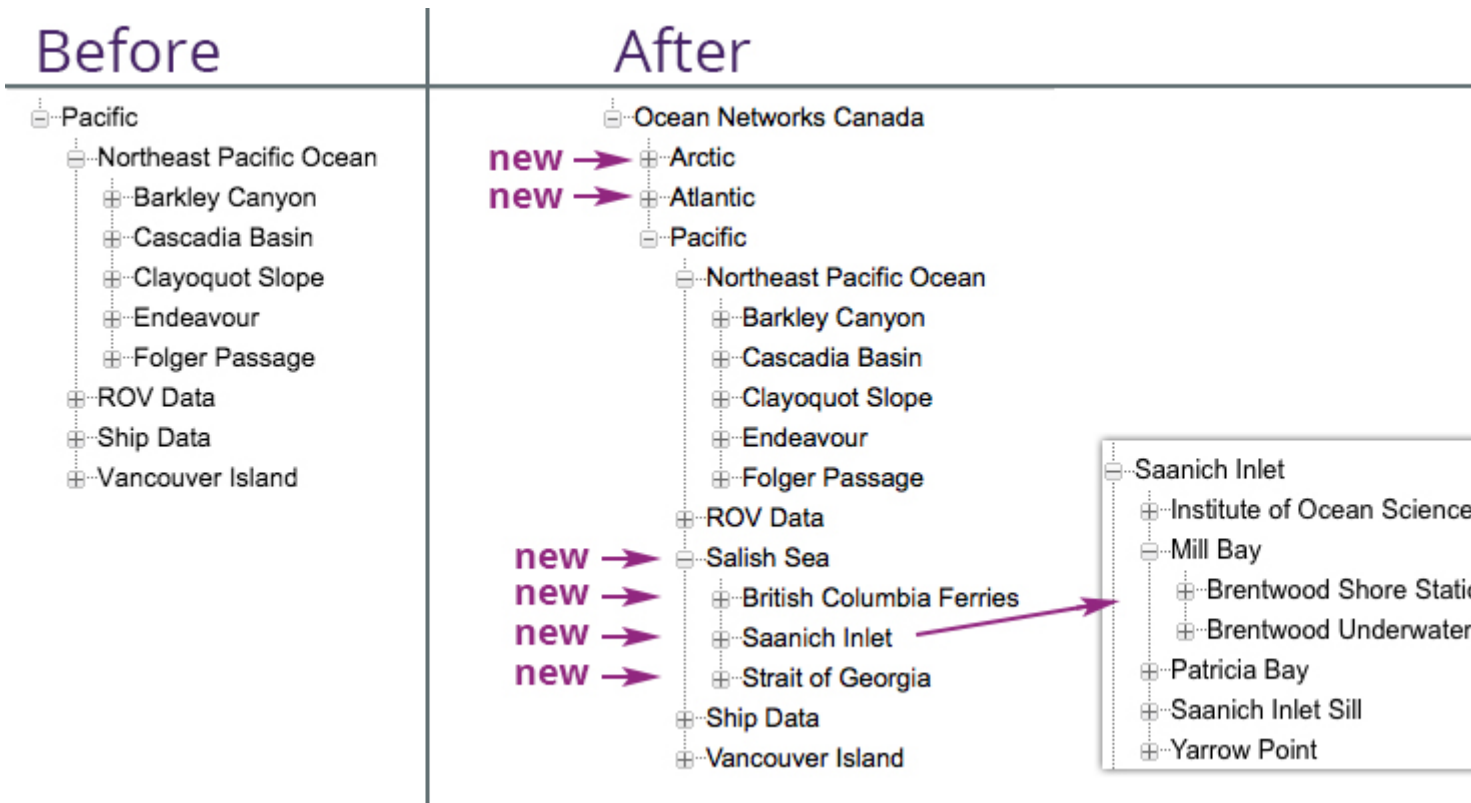
Merged Access to Data from Three Oceans

Data from sources in the Arctic and Atlantic are also now included in the integrated hierarchy; users are no longer required to switch "*observatory preference*" when searching for data from different observatories.



?

Data Search map interface showing data sources in the Arctic, Atlantic and Pacific.



?

With new merged data delivery, data sources in the Arctic, Atlantic, Northeast Pacific and Salish Sea are revealed within a single hierarchy. Data sources from the Brentwood College School community observatory are now nested within Saanich Inlet under Mill Bay.

Your Help Requested

During our software transition over the next several months, please [let us know](#) if you encounter any problems or unexpected behaviours on VENUS or Oceans 2.0.

[Read more about Oceans 2.0](#)

Tags:

- [data](#)
- [Oceans 2.0](#)
- [data search](#)
- [plotting utility](#)

Categories:

- [Data Highlights](#)
- [News Stories](#)
- [Science Highlights](#)

```
// FIXES AMPERSAND IN BREADCRUMB var ONC_breadcrumb =  
document.getElementById("breadcrumb"); if (ONC_breadcrumb) { var ONC_innerHTML =  
ONC_breadcrumb.innerHTML; ONC_innerHTML = ONC_innerHTML.replace("&", "&");  
ONC_breadcrumb.innerHTML = ONC_innerHTML; }
```

Highlights

- [Audio](#)
- [Data](#)
- [Learning](#)
- [Science](#)
- [Video](#)

Reading Room

- [Active Research](#)
- [Backgrounders](#)
- [FAQs](#)
- [Glossary](#)
- [News Briefs](#)
- [News Stories](#)
- [Newsletters](#)
- [Publications](#)

Cool Stuff

- [Apps](#)
- [Digital Fishers](#)
- [iBooks & e-Pubs](#)
- [Live Video](#)
- [Maps](#)
- [Images](#)
- [State of the Ocean](#)

Data & Tools

- [Apps](#)
- [Data Plots](#)
- [Data Search](#)
- [Data Policy](#)
- [Data Help](#)
- [OPeNDAP Web Services](#)

Opportunities

- [Calendar](#)
- [Educator Opportunities](#)
- [Global Partnerships](#)
- [Industry Network](#)
- [Jobs](#)
- [Staff List](#)
- [Technology Services](#)
- [Workshops](#)

Sites & Instruments

- [Arctic Sites](#)
- [Northeast Pacific Sites](#)
- [Salish Sea Sites](#)
- [Notice to Mariners](#)

Follow Us



[Sign up for our newsletter](#)

Feedback

Send us your questions and comments *

How could we improve this page?

Your Name

Your Email *

Your Location

CAPTCHA

This question is for testing whether or not you are a human visitor and to prevent automated spam submissions.



What code is in the image? *
Enter the characters shown in the image.



[About Us](#) | [Contact Us](#) | [Media Relations](#) | [Legal Notices](#)

| 1.250.472.5400

```
(function () { var d = new Date; var year = d.getFullYear();  
document.getElementById("copyright-date").innerHTML = year; })();
```

Source URL: <http://www.oceannetworks.ca/venus-data-now-available-oceans-20>