

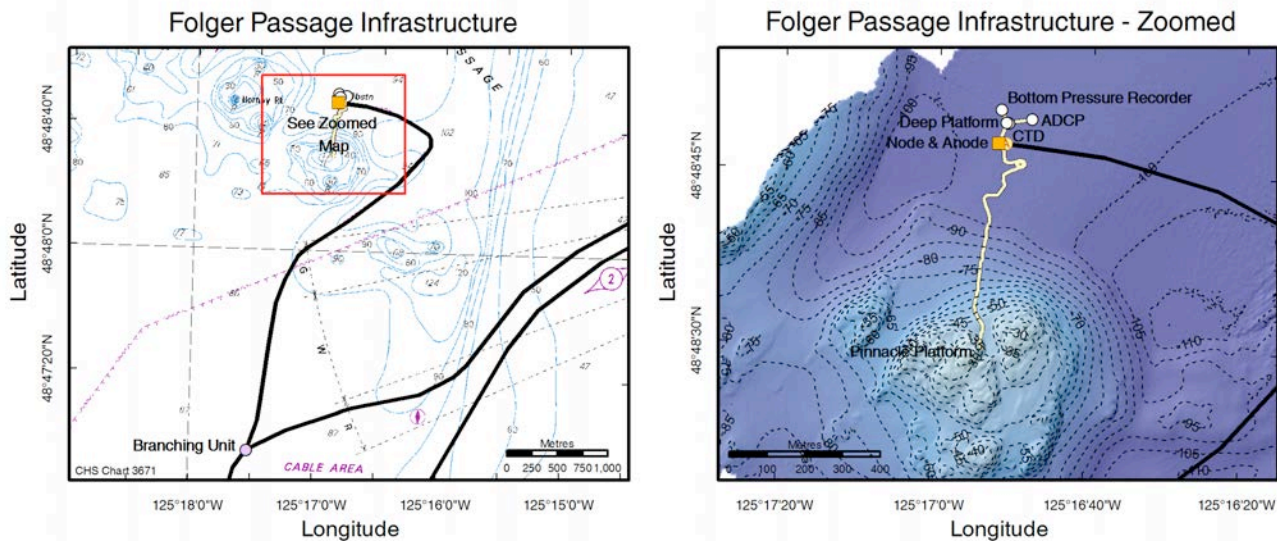
Information for Mariners – October 2018 NEPTUNE Observatory: Folger Passage

Project: The North-East Pacific Undersea Networked Experiments (NEPTUNE) is an oceanographic project managed by Ocean Networks Canada (ONC), an initiative of the University of Victoria. It consists of a cabled observatory off the west coast of Vancouver Island, beginning in Port Alberni and extending 300 km offshore along an 813 km loop. From a shore landing, an armoured marine cable extends along the ocean bottom to large observatory “Nodes”, into which oceanographic instrument systems connect. High voltage power is supplied down the cable, and Ethernet communications along fibre optics bring data and images back to the University in real time. Project status, system information, and data are available from the Ocean Networks Canada website: oceannetworks.ca

What: High voltage marine fibre optic cables and observatory systems (see website for system details).

When: Latest system and instrument deployments in Folger Passage: **17 October 2018**

Where: **Folger Passage, West Coast Vancouver Island.** See [chart # 3671](#) for obstructions and cables.



These figures have been produced by the University of Victoria based on Canadian Hydrographic Service (CHS) charts, pursuant to CHS Direct User License No. 2015-0223-1260-V. The incorporation of data sourced from CHS in these products shall not be construed as constituting an endorsement by CHS of these products. These products do not meet the requirements of the Charts and Nautical Publications Regulations, 1995 under the Canada Shipping Act, 2001. Official charts and publications; corrected and up-to-date, must be used to meet the requirements of those regulations.

Name	Latitude	Longitude	Depth [m]	Notice	Description
Node	48° 48.7931' N	125° 16.8647' W	100 m		Large 7 m yellow trawl resistant frame, 13 tons
Anode	48° 48.7929' N	125° 16.8493' W	108 m		1 m Cylindrical steel can
Branching Unit	48° 46.9263'	125° 17.5287' W	87 m		3 m Cylindrical steel can
Pinnacle Platform	48° 48.4975' N	125° 16.8900' W	25 m		Large (3 m) grey steel frame
Deep Platform	48° 48.8227' N	125° 16.8480' W	95 m		Large (3 m) grey steel frame
ADCP	48° 48.8290' N	125° 16.7938' W	95 m		1m plastic orange grated platform
Bottom Pressure Recorder	48° 48.8416' N	125° 16.8593' W	95 m		Triangular grey steel frame (1 m)
CTD	48° 48.8227' N	125° 16.8434 W	95 m		3 m yellow steel tripod

Contacts: If you have any concerns, or would like further information, please contact either: Adrian Round, Ocean Networks Canada's Director of Observatory Operations at around@uvic.ca or 250-472-5364 or Karen Douglas, GIS Specialist at kdouglas@uvic.ca or 250-472-5359.