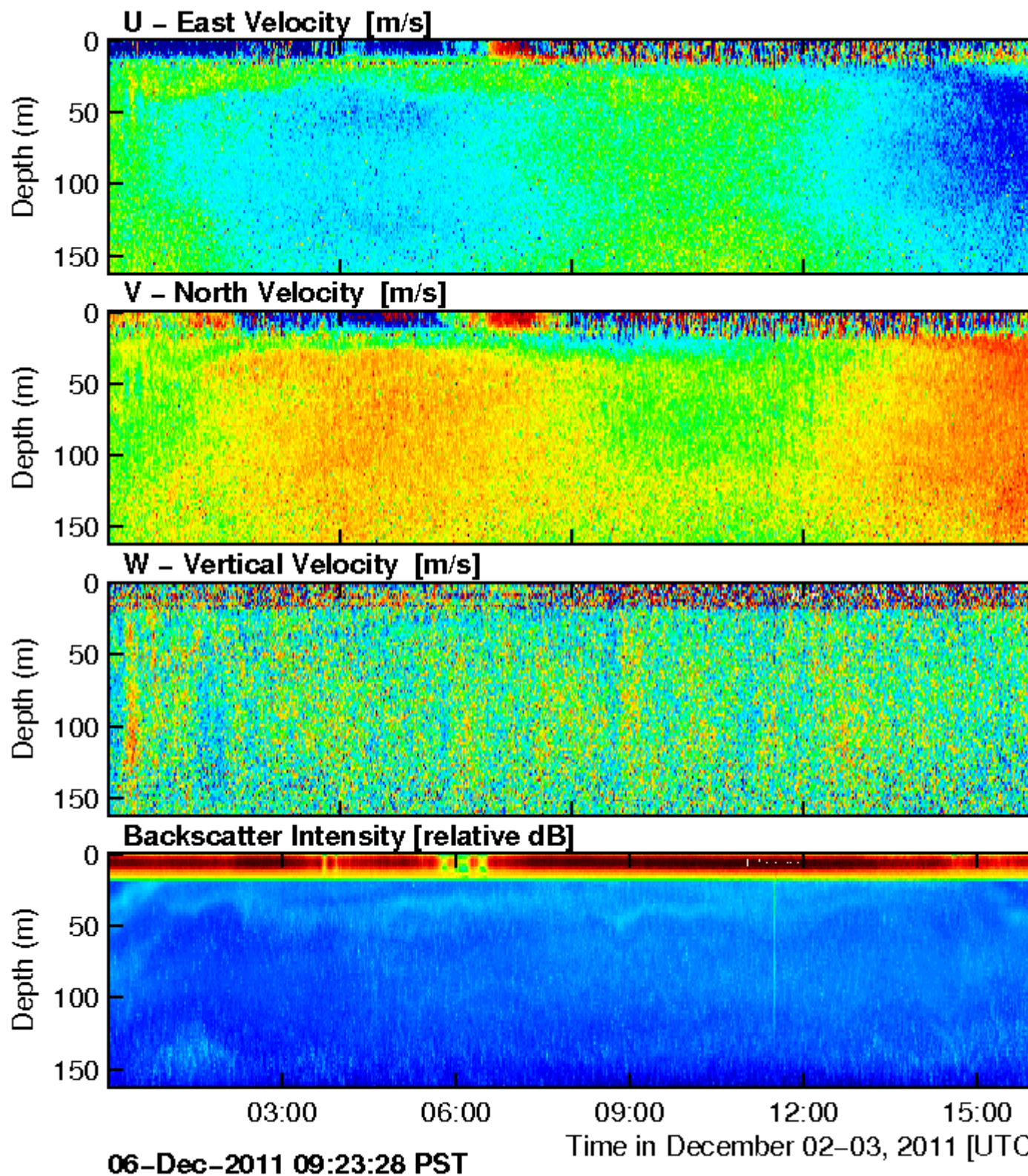


ADCP Velocity Plots now available ^[1]

Submitted by Rory Lattimer Tue, 2011-12-06 00:00

Although we have been collecting Acoustic Doppler Current Profiler (ADCP) data for over two years from various locations in the Strait of Georgia, real-time plots of the data have only recently been added to the Data Plots section. Shown here is a single day of data from the Eastern Strait of Georgia site, showing (top panel) the East/West component, (second panel) the North/South component, (third panel) the Up/Down (vertical) component, and (forth panel) the average back-scatter intensity.

Strait of Georgia East Node 49°2.5309' N/123°19.0351' W



[2]

These data are from 2 Dec 2011. The dominant signal on this day are the strong flood tides (blue in top panel/red in second panel, associated with northwest flow, (i.e. at 17:00), and

relatively weak ebb tides (10:30). Occasional faint vertical banding in the vertical velocity (third panel) is an indication of internal waves, heaving the water column up (reddish) and then down (bluish). The latest 24 hours of ADCP data are available for viewing under the Data Plots section, while both plots and numerical ADCP data since 2008 are available for download.

Tags:

- [adcp](#) ^[3]
- [Acoustic Doppler Current Profiler](#) ^[4]
- [plots](#) ^[5]

Categories:

- [Data Highlights](#) ^[6]

```
// FIXES AMPERSAND IN BREADCRUMB var ONC_breadcrumb =  
document.getElementById("breadcrumb"); if (ONC_breadcrumb) { var ONC_innerHTML =  
ONC_breadcrumb.innerHTML; ONC_innerHTML = ONC_innerHTML.replace("&", "&");  
ONC_breadcrumb.innerHTML = ONC_innerHTML; }
```

Highlights

- [Audio](#)
- [Data](#)
- [Learning](#)
- [Science](#)
- [Video](#)

Reading Room

- [Active Research](#)
- [Backgrounders](#)
- [FAQs](#)
- [Glossary](#)
- [News Briefs](#)
- [News Stories](#)
- [Newsletters](#)
- [Publications](#)

Cool Stuff

- [Apps](#)
- [Digital Fishers](#)
- [iBooks & e-Pubs](#)
- [Live Video](#)
- [Maps](#)
- [Images](#)
- [State of the Ocean](#)

Data & Tools

- [Apps](#)
- [Data Plots](#)
- [Data Search](#)
- [Data Policy](#)
- [Data Help](#)
- [OPeNDAP Web Services](#)

Opportunities

- [Calendar](#)
- [Educator Opportunities](#)
- [Global Partnerships](#)
- [Industry Network](#)
- [Jobs](#)
- [Staff List](#)
- [Technology Services](#)

Sites & Instruments

- [Arctic Sites](#)
- [Northeast Pacific Sites](#)
- [Salish Sea Sites](#)
- [Notice to Mariners](#)

Follow Us



[Sign up for our newsletter](#)

Feedback

Send us your questions and comments *

How could we improve this page?

Your Name

Your Email *

Your Location

CAPTCHA

This question is for testing whether or not you are a human visitor and to prevent automated spam submissions.



What code is in the image? *
Enter the characters shown in the image.



[About Us](#) | [Contact Us](#) | [Media Relations](#) | [Legal Notices](#)

© Ocean Networks Canada. All rights reserved. 2474 Arbutus Road, Victoria, BC, V8N 1V8
| 1.250.472.5400

```
(function () { var d = new Date; var year = d.getFullYear();  
document.getElementById("copyright-date").innerHTML = year; })();
```

Source URL: <https://www.oceannetworks.ca/adcp-velocity-plots-now-available>

Links:

[1] <https://www.oceannetworks.ca/adcp-velocity-plots-now-available>

[2] <https://www.oceannetworks.ca/sites/default/files/images/pages/data/VENUS-ADCP-Plot.png>

[3] <https://www.oceannetworks.ca/article-tags/adcp>

[4] <https://www.oceannetworks.ca/article-tags/acoustic-doppler-current-profiler>

[5] <https://www.oceannetworks.ca/article-tags/plots>

[6] <https://www.oceannetworks.ca/article-categories/data-highlights>