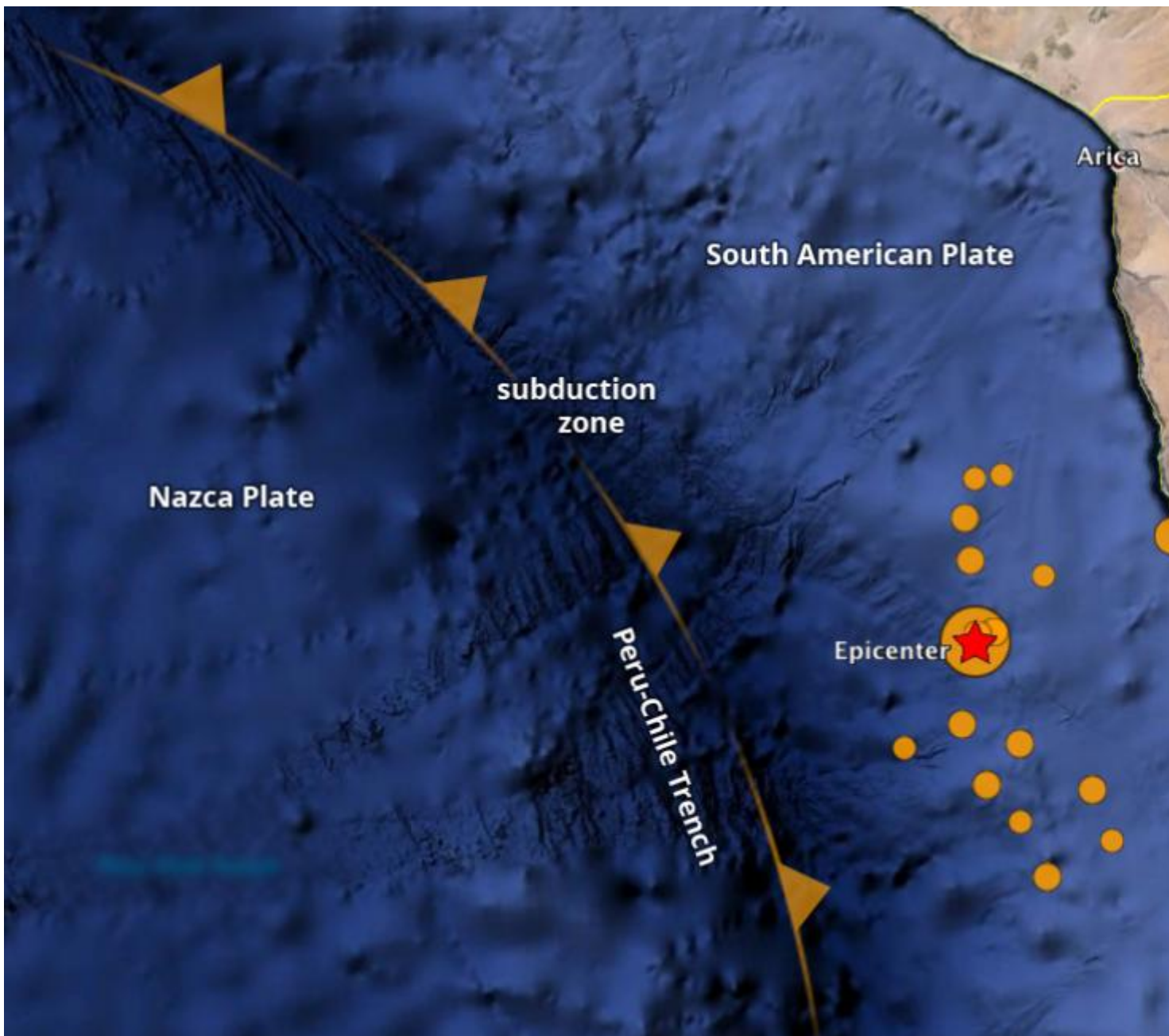


Tsunami alert follows 8.2 quake off Chile

Submitted by Dwight Owens Tue, 2014-04-01 21:25

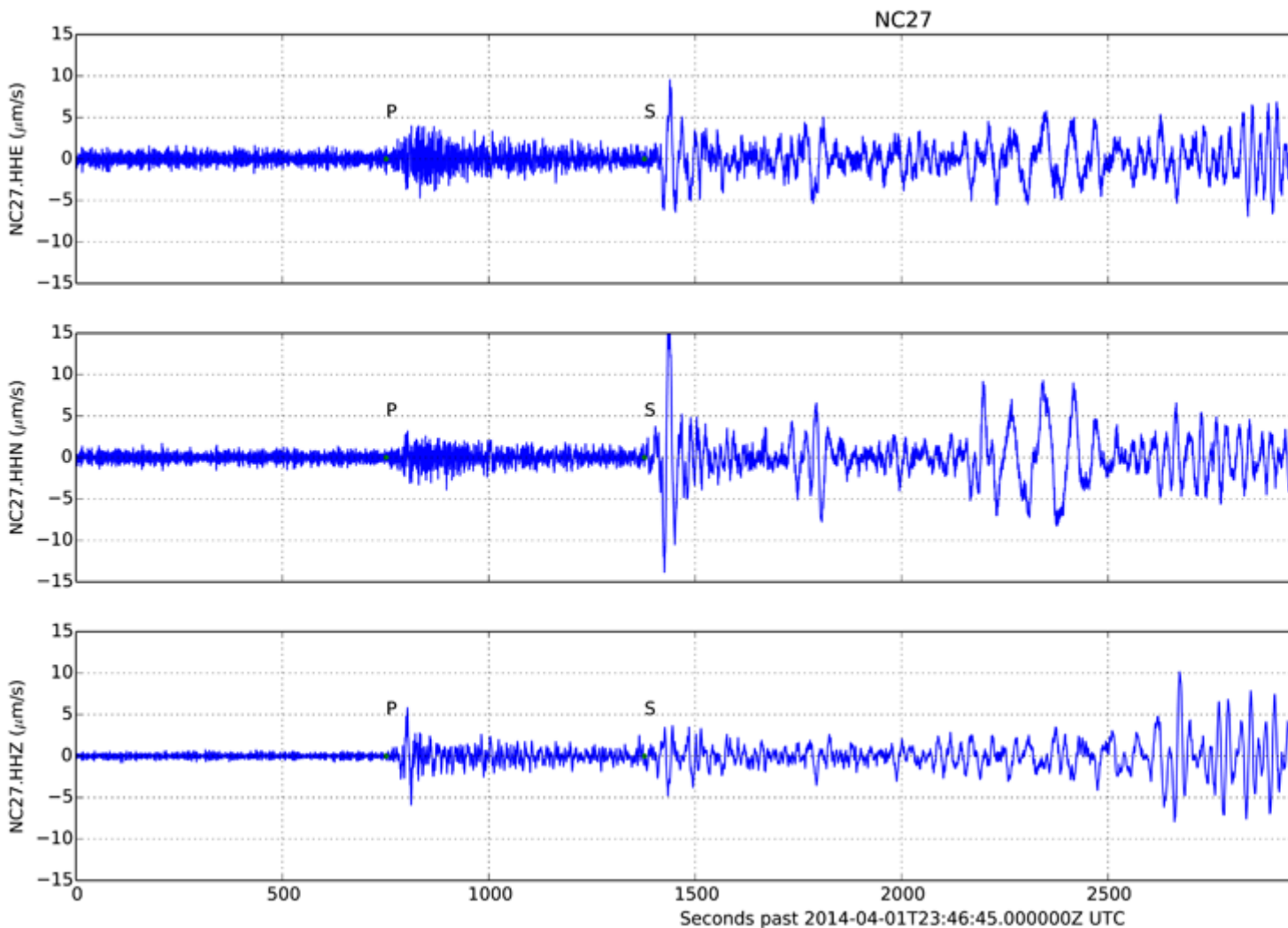
On April 1 at 4:46:45 PM Pacific Daylight Time (23:46:45 UTC), a magnitude 8.2 earthquake occurred off Chile's Pacific coastline, according to the US Geological Survey. Ocean Networks Canada instrumentation captured both ground shaking and a very small tsunami as they crossed the northeast Pacific.



Map of the epicentre and 16 aftershocks along the subduction zone between the Nazca and South American plates, 1 April 2014. Data provided by USGS and plotted using Google Earth. (Click to enlarge.)

At a depth of 20.0 km below the seabed, the shallow near-field quake struck 86 km northwest of the mining area of Iquique, hitting a region that has been rocked by numerous quakes over the past two weeks. According to the USGS, this earthquake occurred as the result of thrust faulting at shallow depths near the Chilean coast. The location and mechanism of the earthquake are consistent with slip on the primary plate boundary interface, or megathrust, between the Nazca and South America plates. In this area, the Nazca plate subducts eastward beneath the South America plate at a rate of 65 mm/yr. Subduction along the Peru-Chile Trench to the west of Chile has generated the uplift of the Andes mountain range.

Ocean Networks Canada's seismometer in Cascadia Basin recorded the tremors as they crossed the North Pacific. Seismic data clearly indicate arrival of the initial P waves approximately 750 seconds (12.5 minutes) after the earthquake, and following S waves about 1375 seconds (23 minutes) after the earthquake struck. Bottom Pressure Recorders on the NEPTUNE Observatory also detected passage of the tsunami in real time, as it crosses our observing stations in the northeast Pacific.



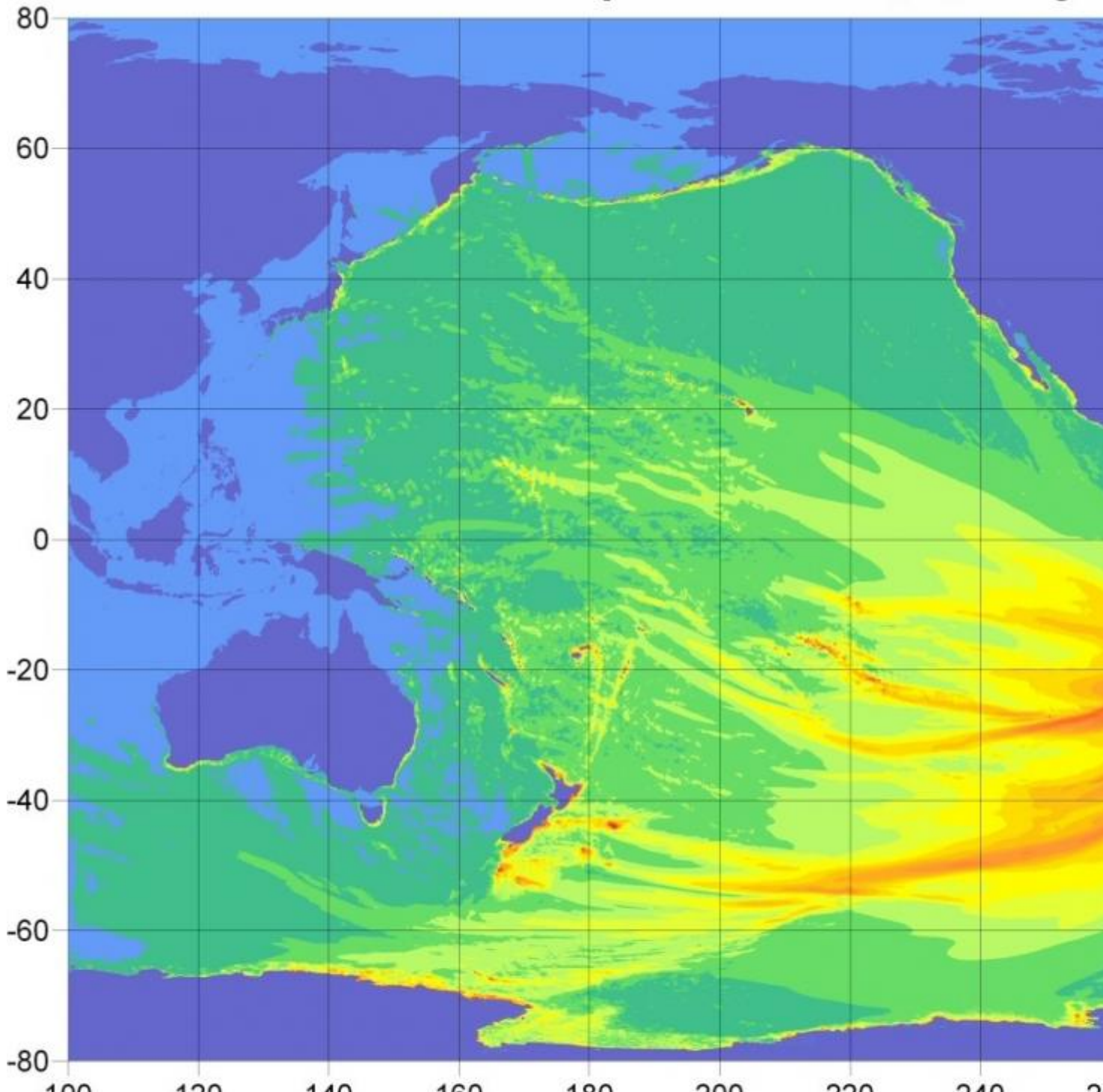
Data from the Cascadia Basin ocean-bottom seismometer indicating arrival of P and S waves. The top trace shows East-West motions, the centre trace shows North-South motions, and the lower trace shows vertical motions. (Click to enlarge.)

A 1.9-metre tsunami was recorded at a northern Chilean port Tuesday evening. The Pacific Tsunami Warning Center issued an alert for all of Latin America's Pacific coast. There was no threat issued to the Pacific coast along North America.

NOAA issued a forecast of tsunami heights as the energy propagated away from the source region, indicating heights up to 100 cm close to the epicenter, with rays of 2-10 cm wave heights extending across portions of the South Pacific Ocean toward New Zealand and archipelagos in the South-Central Pacific.

Tsunami Propagation Forecast

Contours of forecasted maximum wave amplitudes above sea level [cm], detailing tsunami

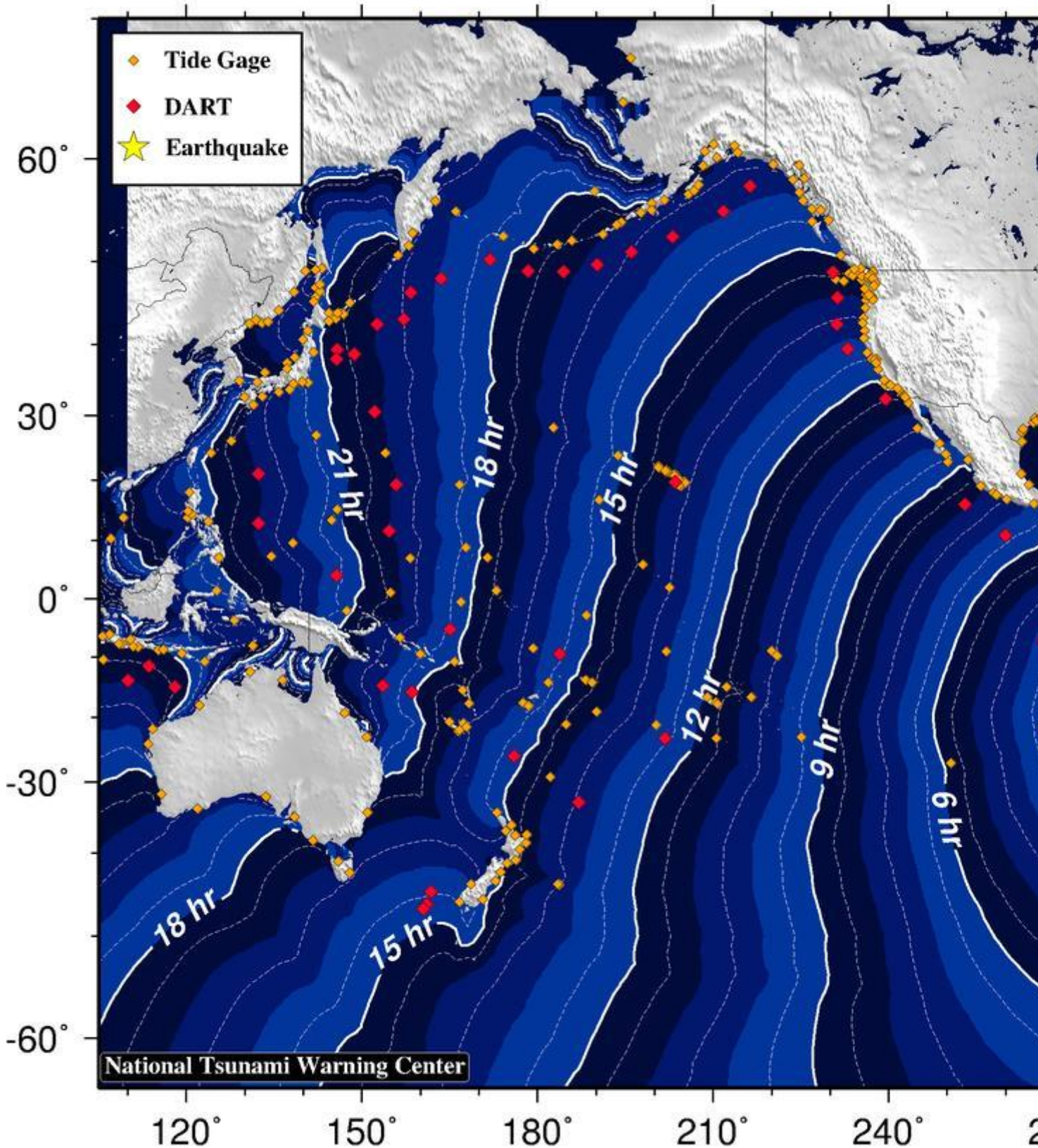


Tsunami wave energy propagation forecast issued by the Pacific Tsunami Warning Center, showing contours of maximum wave amplitudes (in cm) associated with the 1 April 2014 earthquake.

Travel times for tsunami propagation were also modeled by the National Tsunami Warning Center, with expected arrival of a small (2-4 cm) tsunami in coastal British Columbia beginning 15 hours after the event, around 7:00 AM Pacific Daylight Time.

Tsunami Travel Times

Tsunami travel time contours in hours, beginning from the earthquake origin t



- [seismometer](#)
- [seismic](#)
- [Seismic Data](#)
- [subduction](#)
- [megathrust](#)
- [tectonics](#)
- [plate tectonics](#)

Categories:

- [Data Highlights](#)
- [Science Highlights](#)

```
// FIXES AMPERSAND IN BREADCRUMB var ONC_breadcrumb =  
document.getElementById("breadcrumb"); if (ONC_breadcrumb) { var ONC_innerHTML =  
ONC_breadcrumb.innerHTML; ONC_innerHTML = ONC_innerHTML.replace("&", "&");  
ONC_breadcrumb.innerHTML = ONC_innerHTML; }
```

Highlights

- [Audio](#)
- [Data](#)
- [Learning](#)
- [Science](#)
- [Video](#)

Reading Room

- [Active Research](#)
- [Backgrounders](#)
- [FAQs](#)
- [Glossary](#)
- [News Briefs](#)
- [News Stories](#)
- [Newsletters](#)
- [Publications](#)

Cool Stuff

- [Apps](#)
- [Digital Fishers](#)
- [iBooks & e-Pubs](#)
- [Live Video](#)
- [Maps](#)
- [Images](#)
- [State of the Ocean](#)

Data & Tools

- [Apps](#)
- [Data Plots](#)
- [Data Search](#)
- [Data Policy](#)
- [Data Help](#)
- [OPeNDAP Web Services](#)

Opportunities

- [Calendar](#)
- [Educator Opportunities](#)
- [Global Partnerships](#)
- [Industry Network](#)
- [Jobs](#)
- [Staff List](#)
- [Technology Services](#)
- [Workshops](#)

Sites & Instruments

- [Arctic Sites](#)
- [Northeast Pacific Sites](#)
- [Salish Sea Sites](#)
- [Notice to Mariners](#)

Follow Us



[Sign up for our newsletter](#)

Feedback

Send us your questions and comments *

How could we improve this page?

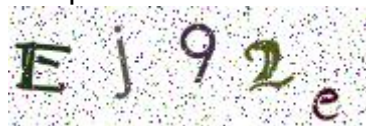
Your Name

Your Email *

Your Location

CAPTCHA

This question is for testing whether or not you are a human visitor and to prevent automated spam submissions.



What code is in the image? *

Enter the characters shown in the image.



[About Us](#) | [Contact Us](#) | [Media Relations](#) | [Legal Notices](#)

© Ocean Networks Canada. All rights reserved. 2474 Arbutus Road, Victoria, BC, V8N 1V8
| 1.250.472.5400

```
(function () { var d = new Date; var year = d.getFullYear();  
document.getElementById("copyright-date").innerHTML = year; })();
```

Source URL: <http://www.oceannetworks.ca/tsunami-alert-follows-82-quake-chile>