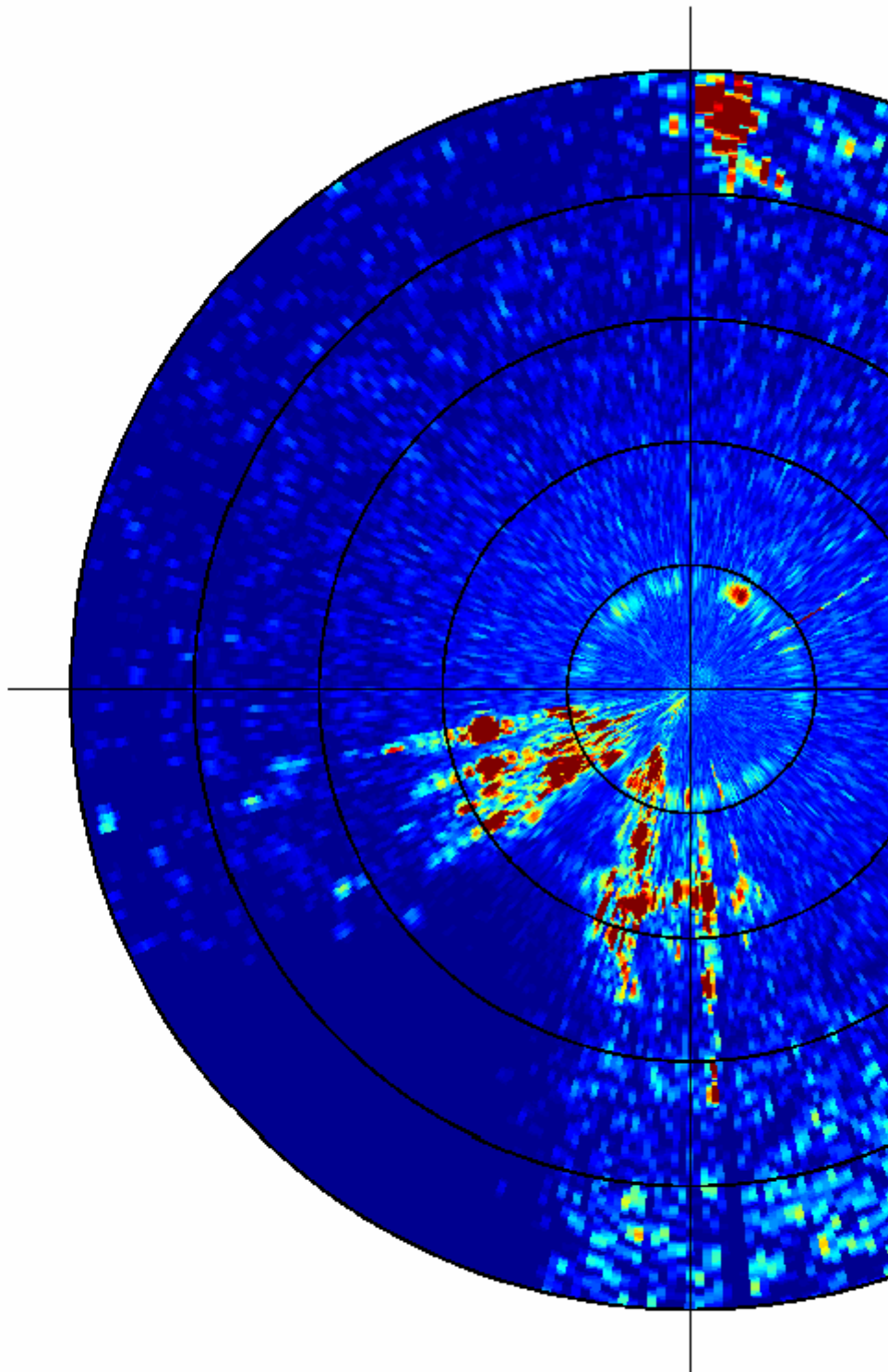


Imagenex Last 24 Hours Sector Sonar Plots Now Available ^[1]

Submitted by Rory Lattimer Mon, 2012-06-04 00:00

Strait of Georgia East Node 49° 5.053' N/123° 19.1



 **VENUS**

25-May-2012 13:21:08 PDT

[2]

Deployed at our [Fraser Delta](#) [3] site in the Strait of Georgia are various sonar systems. In addition to the upward looking [echo-sounder](#) [4] (200 kHz ZAP), we have a downward looking

scanning [sonar](#) [5] built by Imagenex. Shown here is a series of single scan images, and when compiled into an animation, the time-lapsed set of hourly images shows the changes detected by the sonar. This scanning sonar sweeps out a radial scan of the ocean bottom to detect and monitor changes in the bedforms. Seen in these images is the corner of the instrument platform (lower left corner), and bottom roughness out towards the right. In the animations from May and June, we also see the daily occurrence of a high concentration of suspended sediment, when the entire image shows yellow and orange backscatter. These events, which occur during the peak freshet of the Fraser River, are associated with the downward settling of the river sediment after low tide.

Tags:

- [Imagenex](#) [6]
- [fraser delta](#) [7]
- [ddl](#) [8]
- [sonar](#) [9]
- [time-lapse](#) [10]

Categories:

- [Data Highlights](#) [11]

```
// FIXES AMPERSAND IN BREADCRUMB var ONC_breadcrumb =  
document.getElementById("breadcrumb"); if (ONC_breadcrumb) { var ONC_innerHTML =  
ONC_breadcrumb.innerHTML; ONC_innerHTML = ONC_innerHTML.replace("&", "&");  
ONC_breadcrumb.innerHTML = ONC_innerHTML; }
```

Highlights

- [Audio](#)
- [Data](#)
- [Learning](#)
- [Science](#)
- [Video](#)

Reading Room

- [Active Research](#)
- [Backgrounders](#)
- [FAQs](#)

- [Glossary](#)
- [News Briefs](#)
- [News Stories](#)
- [Newsletters](#)
- [Publications](#)

Cool Stuff

- [Apps](#)
- [Digital Fishers](#)
- [iBooks & e-Pubs](#)
- [Live Video](#)
- [Maps](#)
- [Images](#)
- [State of the Ocean](#)

Data & Tools

- [Apps](#)
- [Data Plots](#)
- [Data Search](#)
- [Data Policy](#)
- [Data Help](#)
- [OPeNDAP Web Services](#)

Opportunities

- [Calendar](#)
- [Educator Opportunities](#)
- [Global Partnerships](#)
- [Industry Network](#)
- [Jobs](#)
- [Staff List](#)
- [Technology Services](#)
- [Workshops](#)

Sites & Instruments

- [Arctic Sites](#)
- [Northeast Pacific Sites](#)
- [Salish Sea Sites](#)
- [Notice to Mariners](#)

Follow Us



[Sign up for our newsletter](#)

Feedback

Send us your questions and comments *

How could we improve this page?

Your Name

Your Email *

Your Location

CAPTCHA

This question is for testing whether or not you are a human visitor and to prevent automated spam submissions.



What code is in the image? *
Enter the characters shown in the image.



[About Us](#) | [Contact Us](#) | [Media Relations](#) | [Legal Notices](#)

```
(function () { var d = new Date; var year = d.getFullYear();  
document.getElementById("copyright-date").innerHTML = year; })();
```

Source URL: <http://www.oceannetworks.ca/imagenex-last-24-hours-sector-sonar-plots-now-available>

Links:

- [1] <http://www.oceannetworks.ca/imagenex-last-24-hours-sector-sonar-plots-now-available>
- [2] http://www.oceannetworks.ca/sites/default/files/images/pages/Fraser/IOTW_VSG-IMG881A3899-Daily-Animation.gif
- [3] <http://www.oceannetworks.ca/installations/observatories/salish-sea/fraser-delta>
- [4] <http://www.oceannetworks.ca/installations/infrastructure/instrument-info/16>
- [5] <http://www.oceannetworks.ca/installations/infrastructure/instrument-info/34>
- [6] <http://www.oceannetworks.ca/article-tags/imagenex>
- [7] <http://www.oceannetworks.ca/article-tags/fraser-delta>
- [8] <http://www.oceannetworks.ca/article-tags/ddl>
- [9] <http://www.oceannetworks.ca/article-tags/sonar>
- [10] <http://www.oceannetworks.ca/article-tags/time-lapse-0>
- [11] <http://www.oceannetworks.ca/article-categories/data-highlights>