

Community Observatory Keeps Eye on Arctic Sea Ice ^[1]

Submitted by Rory Lattimer Mon, 2012-08-27 00:00

The University of Victoria's Ocean Networks Canada (ONC) is making its first foray into the Arctic, just as the sea ice extent is setting a new record low.

The observatory has been granted a five-year research license from the Nunavut Research Institute for a cabled seafloor observatory system and surface weather station in the coastal hamlet of [Cambridge Bay](#)^[2], Nunavut. The community observatory, using technologies developed by UVic's VENUS and NEPTUNE observatories, intends to provide year-round, near real-time undersea monitoring of the northern environment, and to make research data available to the community for educational and other purposes.

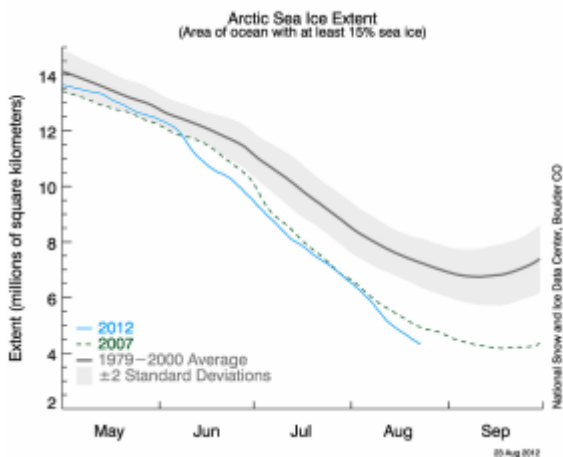


[3]

Installation is planned for completion before the ice returns in late September. With a few more weeks left in the melt season, the sea ice hit its lowest levels over the weekend, as measured by satellite index dating back to 1979.

The significance of having continuous monitoring of the Arctic Ocean cannot be overstated, says Dr. Kate Moran, president and CEO of ONC, who led the first drilling expedition to the central Arctic Ocean in 2004 with the Ocean Drilling Program, an international joint initiative. This specially designed scaled-down version of our seafloor networks will support longer-

term science-based understanding of dramatic changes taking place in the fragile northern ecosystem?such as the historic receding of the Arctic sea ice we are seeing this year.?



[4]

The ONC is the world's largest and most advanced cabled ocean observatory?made up of UVic's NEPTUNE and VENUS observatories. It is changing the way we study the oceans, providing scientific evidence on a wide range of critical issues, and developing new world-leading technologies. An initiative of UVic, the observatory is a national facility supported through funding from the governments of Canada and BC.

For more information:

[Cambridge Bay Backgrounder](#) [5]

[Arctic Sea Ice FAQ](#) [6]

Tags:

- [Cambridge Bay](#) [7]
- [Arctic Sea Ice](#) [8]
- [Nunavut Research Institute](#) [9]

Categories:

- [News Stories](#) [10]

```
// FIXES AMPERSAND IN BREADCRUMB var ONC_breadcrumb =  
document.getElementById("breadcrumb"); if (ONC_breadcrumb) { var ONC_innerHTML =  
ONC_breadcrumb.innerHTML; ONC_innerHTML = ONC_innerHTML.replace("&", "&");  
ONC_breadcrumb.innerHTML = ONC_innerHTML; }
```

Highlights

- [Audio](#)
- [Data](#)
- [Learning](#)
- [Science](#)
- [Video](#)

Reading Room

- [Active Research](#)
- [Backgrounders](#)
- [FAQs](#)
- [Glossary](#)
- [News Briefs](#)
- [News Stories](#)
- [Newsletters](#)
- [Publications](#)

Cool Stuff

- [Apps](#)
- [Digital Fishers](#)
- [iBooks & e-Pubs](#)
- [Live Video](#)
- [Maps](#)
- [Images](#)
- [State of the Ocean](#)

Data & Tools

- [Apps](#)
- [Data Plots](#)
- [Data Search](#)
- [Data Policy](#)
- [Data Help](#)

- [OPeNDAP Web Services](#)

Opportunities

- [Calendar](#)
- [Educator Opportunities](#)
- [Global Partnerships](#)
- [Industry Network](#)
- [Jobs](#)
- [Staff List](#)
- [Technology Services](#)

Sites & Instruments

- [Arctic Sites](#)
- [Northeast Pacific Sites](#)
- [Salish Sea Sites](#)
- [Notice to Mariners](#)

Follow Us



[Sign up for our newsletter](#)

Feedback

Send us your questions and comments *

How could we improve this page?

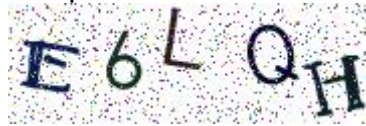
Your Name

Your Email *

Your Location

CAPTCHA

This question is for testing whether or not you are a human visitor and to prevent automated spam submissions.



What code is in the image? *
Enter the characters shown in the image.



[About Us](#) | [Contact Us](#) | [Media Relations](#) | [Legal Notices](#)

© Ocean Networks Canada. All rights reserved. 2474 Arbutus Road, Victoria, BC, V8N 1V8
| 1.250.472.5400

```
(function () { var d = new Date; var year = d.getFullYear();  
document.getElementById("copyright-date").innerHTML = year; })();
```

Source URL: <https://www.oceannetworks.ca/community-observatory-keeps-eye-arctic-sea-ice>

Links:

- [1] <https://www.oceannetworks.ca/community-observatory-keeps-eye-arctic-sea-ice>
- [2] <http://www.cambridgebay.ca/>
- [3] https://www.oceannetworks.ca/sites/default/files/images/pages/maps/cambridge_bay.jpg
- [4] https://www.oceannetworks.ca/sites/default/files/images/pages/data/n_stddev_timeseries_aug23.png
- [5] <https://www.oceannetworks.ca/cambridge-bay-mini-observatory-backgrounder>
- [6] <http://nsidc.org/arcticseaicenews/faq/>
- [7] <https://www.oceannetworks.ca/article-tags/cambridge-bay>
- [8] <https://www.oceannetworks.ca/article-tags/arctic-sea-ice>
- [9] <https://www.oceannetworks.ca/article-tags/nunavut-research-institute>
- [10] <https://www.oceannetworks.ca/article-categories/news-stories>