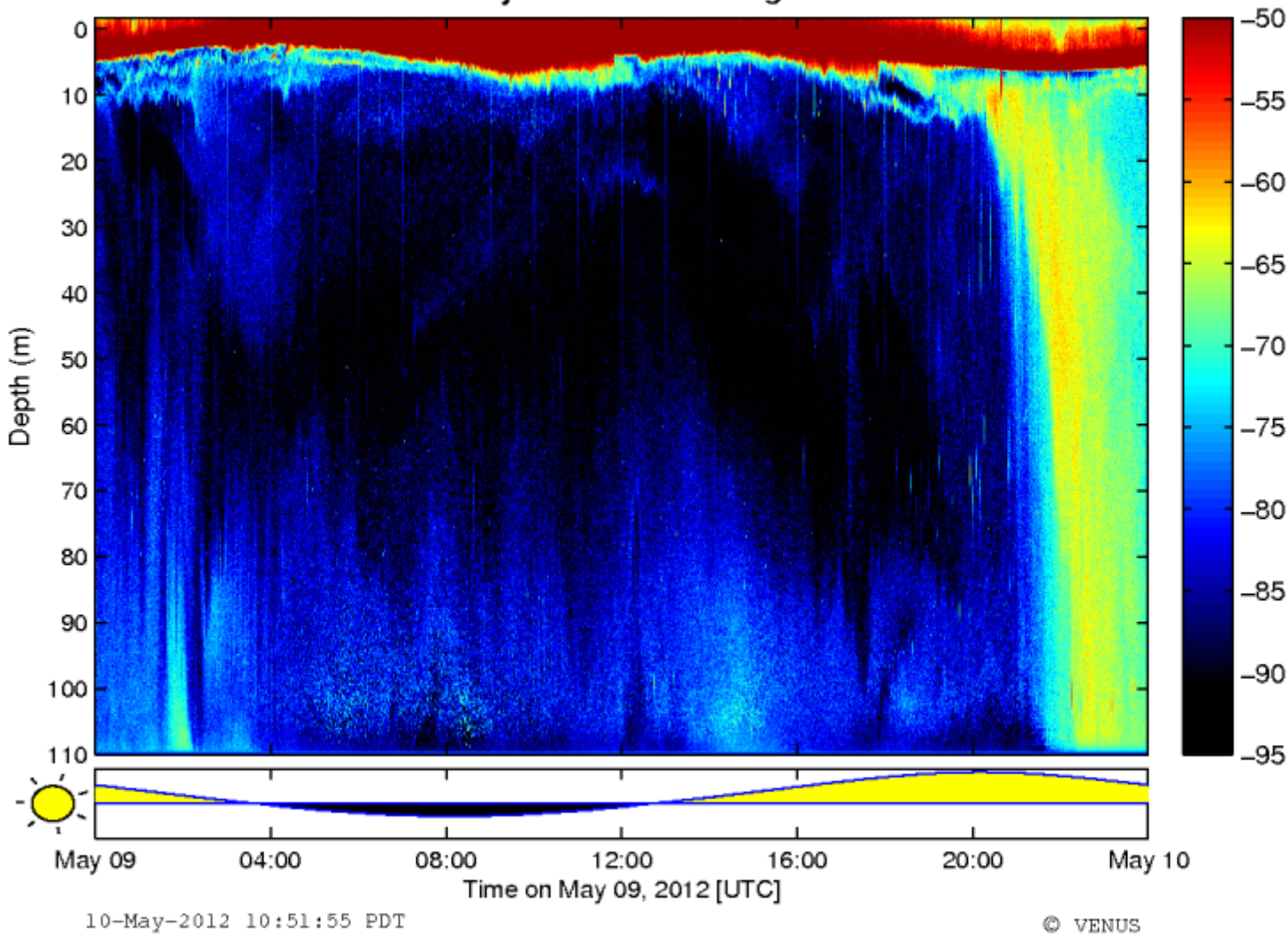


Sediment Cascade From Fraser River ^[1]

Submitted by Rory Lattimer Mon, 2012-05-14 00:00

SG East Node 49°5.053' N/123°19.752' W ASLZAP1009 110m
Daily 30 Second Average



[2]

The Fraser River freshet is starting (snow pack melt in the coastal mountains), and the

suspended sediment loads coming out of the river mouth into the Strait of Georgia are also increasing. This is especially evident at our Fraser Delta site, located just south of the mouth of the Fraser River. In these data plots we can see that at low tide, when the river runs fastest, there is a spike in the near bottom turbidity at our Fraser Delta site, associated with the cascade of suspended sediment, as evidenced in the 200 kHz ZAP echogram. During this first week of May (2012), the low tides have been occurring late in the day (16:00-17:00 PDT, 23:00-24:00 UTC), and we have seen a steady increase in the near bottom turbidity signal just after low tide.

Tags:

- [Freshet](#) [3]
- [Fraser River Delta](#) [4]
- [ddl](#) [5]
- [Sediment Cascade](#) [6]

Categories:

- [Data Highlights](#) [7]

```
// FIXES AMPERSAND IN BREADCRUMB var ONC_breadcrumb =  
document.getElementById("breadcrumb"); if (ONC_breadcrumb) { var ONC_innerHTML =  
ONC_breadcrumb.innerHTML; ONC_innerHTML = ONC_innerHTML.replace("&", "&");  
ONC_breadcrumb.innerHTML = ONC_innerHTML; }
```

Highlights

- [Audio](#)
- [Data](#)
- [Learning](#)
- [Science](#)
- [Video](#)

Reading Room

- [Active Research](#)
- [Backgrounders](#)
- [FAQs](#)
- [Glossary](#)
- [News Briefs](#)

- [News Stories](#)
- [Newsletters](#)
- [Publications](#)

Cool Stuff

- [Apps](#)
- [Digital Fishers](#)
- [iBooks & e-Pubs](#)
- [Live Video](#)
- [Maps](#)
- [Images](#)
- [State of the Ocean](#)

Data & Tools

- [Apps](#)
- [Data Plots](#)
- [Data Search](#)
- [Data Policy](#)
- [Data Help](#)
- [OPeNDAP Web Services](#)

Opportunities

- [Calendar](#)
- [Educator Opportunities](#)
- [Global Partnerships](#)
- [Industry Network](#)
- [Jobs](#)
- [Staff List](#)
- [Technology Services](#)

Sites & Instruments

- [Arctic Sites](#)
- [Northeast Pacific Sites](#)

- [Salish Sea Sites](#)
- [Notice to Mariners](#)

Follow Us



[Sign up for our newsletter](#)

Feedback

Send us your questions and comments *

How could we improve this page?

Your Name

Your Email *

Your Location

CAPTCHA

This question is for testing whether or not you are a human visitor and to prevent automated spam submissions.



What code is in the image? *

Enter the characters shown in the image.



[About Us](#) | [Contact Us](#) | [Media Relations](#) | [Legal Notices](#)

© Ocean Networks Canada. All rights reserved. 2474 Arbutus Road, Victoria, BC, V8N 1V8
| 1.250.472.5400

```
(function () { var d = new Date; var year = d.getFullYear();  
document.getElementById("copyright-date").innerHTML = year; })();
```

Source URL: <https://www.oceannetworks.ca/sediment-cascade-fraser-river>

Links:

- [1] <https://www.oceannetworks.ca/sediment-cascade-fraser-river>
- [2] https://www.oceannetworks.ca/sites/default/files/images/pages/data/IOTW_VSG-ASLZAP1009-24h_0.png
- [3] <https://www.oceannetworks.ca/article-tags/freshet>
- [4] <https://www.oceannetworks.ca/article-tags/fraser-river-delta>
- [5] <https://www.oceannetworks.ca/article-tags/ddl>
- [6] <https://www.oceannetworks.ca/article-tags/sediment-cascade>
- [7] <https://www.oceannetworks.ca/article-categories/data-highlights>