

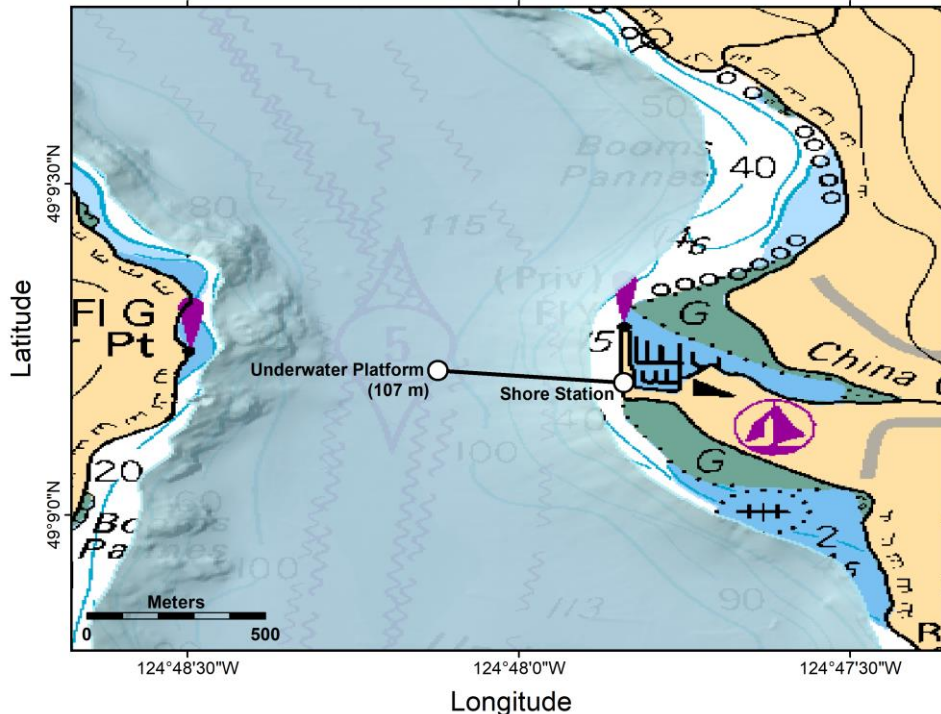
**Notice to Mariners – April 2020**  
**SMART Oceans/ONC China Creek**

**Project:** The China Creek subsea platform, managed by Ocean Networks Canada (ONC) of the University of Victoria, contains a suite of instruments used for ocean observing. From the dock in China Creek, a marine cable extends along the ocean bottom to small array of oceanographic instrument systems. A wireless link transmits data to the shore station. The data and images are then sent back to the University of Victoria. Project status, system information, and data are available from the ONC website:  
<http://www.oceannetworks.ca>

**What:** Marine cables and observatory systems (see web site for system details).

**When:** Latest system and instrument deployments in China Creek: **9 March 2020**

**China Creek Site Overview**



*This figure has been produced by the University of Victoria based on Canadian Hydrographic Service (CHS) charts, pursuant to CHS Direct User License No. 2019-1004-1260-LV. The incorporation of data sourced from CHS in these products shall not be construed as constituting an endorsement by CHS of these products. These products do not meet the requirements of the Charts and Nautical Publications Regulations, 1995 under the Canada Shipping Act, 2001. Official charts and publications; corrected and up-to-date, must be used to meet the requirements of those regulations.*

**Installations:**

Name	Latitude	Longitude	Depth (m)	Notices	Description
Instrument Platform	49.15364	-124.80204	107	NW-P-0470-20	2 m grey rectangular platform

**Cables and Lines:** A cable runs from the shore station located on the pier at 49.15333 N, -124.79736 W. From there, it extends subsea to the instrument platform.

**Contacts:** If you have any concerns, or would like further information, please contact either: Adrian Round, Ocean Networks Canada’s Director of Observatory Operations, at [around@uvic.ca](mailto:around@uvic.ca) or 250-472-5364 or Mark Rankin, GIS Specialist, at [markrankin@uvic.ca](mailto:markrankin@uvic.ca) or (250) 472-5386.